



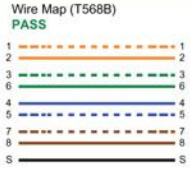
Cable ID: RAC 01

Test Summary: PASS

Date / Time: 06/20/2007 12:00:26pm
 Headroom: 6.6 dB (NEXT 36-45)
 Test Limit: TIA Cat 6 Perm. Link
 Cable Type: Cat 7 SSTP

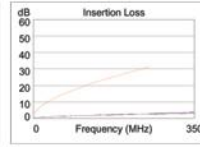
Operator: SLAVEN AXA-TEL
 Software Version: 1.3100
 Limits Version: 1.0200
 NVP: 76.0%

Model: DTX-1800
 Main S/N: 9340117
 Remote S/N: 9340118
 Main Adapter: DTX-PLA001
 Remote Adapter: DTX-PLA001



Length (ft), Limit 295	[Pair 36]	25
Prop. Delay (ns), Limit 498	[Pair 12]	35
Delay Skew (ns), Limit 44	[Pair 12]	1
Resistance (ohms)	[Pair 36]	1.4

Insertion Loss Margin (dB)	[Pair 36]	28.2
Frequency (MHz)	[Pair 36]	250.0
Limit (dB)	[Pair 36]	31.1



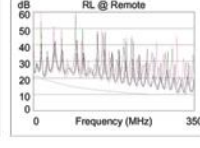
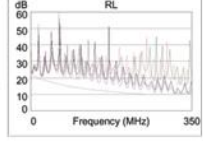
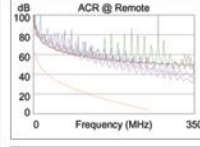
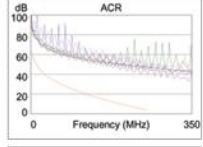
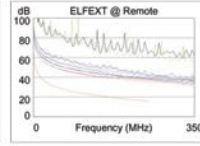
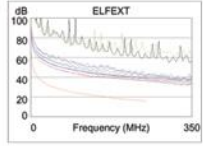
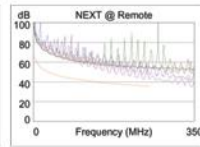
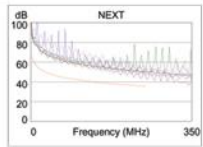
	Worst Case Margin		Worst Case Value	
	MAIN	SR	MAIN	SR
PASS				
Worst Pair	36-45	36-45	36-45	36-45
NEXT (dB)	7.3	6.6	7.3	6.6
Freq. (MHz)	239.0	238.5	239.0	239.5
Limit (dB)	35.7	35.7	35.7	35.6
Worst Pair	45	45	45	45
PSNEXT (dB)	8.9	8.0	8.9	8.0
Freq. (MHz)	239.0	238.0	239.0	238.5
Limit (dB)	33.0	33.1	33.0	33.0

	Worst Case Margin		Worst Case Value	
	MAIN	SR	MAIN	SR
PASS				
Worst Pair	36-78	78-36	36-78	78-36
ELFEXT (dB)	17.0	16.9	19.5	19.2
Freq. (MHz)	1.1	1.1	249.5	250.0
Limit (dB)	63.2	63.2	16.2	16.2
Worst Pair	36	36	36	36
PSELFEXT (dB)	17.8	18.1	20.3	20.6
Freq. (MHz)	1.0	1.0	250.0	249.5
Limit (dB)	61.2	61.2	13.2	13.2

	Worst Case Margin		Worst Case Value	
	MAIN	SR	MAIN	SR
N/A				
Worst Pair	45-78	45-78	36-45	36-45
ACR (dB)	21.8	24.4	34.9	34.2
Freq. (MHz)	4.5	6.6	239.0	239.5
Limit (dB)	59.5	56.1	5.4	5.3
Worst Pair	78	78	45	45
PSACR (dB)	20.8	23.1	36.5	35.5
Freq. (MHz)	3.9	5.4	239.0	238.5
Limit (dB)	58.5	55.7	2.7	2.8

	Worst Case Margin		Worst Case Value	
	MAIN	SR	MAIN	SR
N/A				
Worst Pair	36	45	45	45
RL (dB)	1.4	1.5	2.7	3.9
Freq. (MHz)	3.3	24.1	238.0	224.5
Limit (dB)	21.0	19.1	10.2	10.5

Compliant Network Standards:
 10BASE-T 100BASE-TX 100BASE-T4
 1000BASE-T ATM-25 ATM-S1
 ATM-155 100VG-AnyLan TR-4
 TR-16 Active TR-16 Passive



Project: NOVA BILA
 Site: PRO CREDIT

UNTITLED.flw



Cable ID: RAC 02

Test Summary: PASS

Date / Time: 06/20/2007 12:01:51pm
 Headroom: 9.4 dB (NEXT 36-45)
 Test Limit: TIA Cat 6 Perm. Link
 Cable Type: Cat 7 SSTP

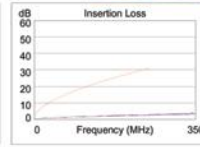
Operator: SLAVEN AXA-TEL
 Software Version: 1.3100
 Limits Version: 1.0200
 NVP: 76.0%

Model: DTX-1800
 Main S/N: 9340117
 Remote S/N: 9340118
 Main Adapter: DTX-PLA001
 Remote Adapter: DTX-PLA001



Length (ft), Limit 295	[Pair 36]	25
Prop. Delay (ns), Limit 498	[Pair 12]	35
Delay Skew (ns), Limit 44	[Pair 12]	1
Resistance (ohms)	[Pair 36]	1.4

Insertion Loss Margin (dB)	[Pair 36]	28.2
Frequency (MHz)	[Pair 36]	250.0
Limit (dB)	[Pair 36]	31.1



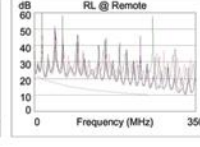
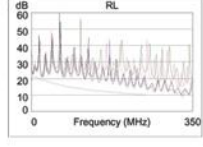
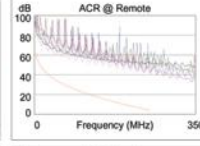
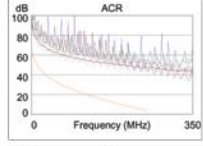
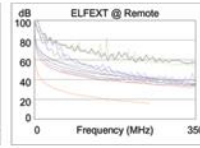
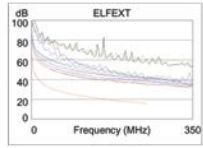
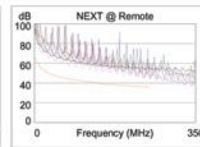
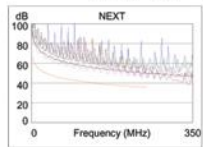
	Worst Case Margin		Worst Case Value	
	MAIN	SR	MAIN	SR
PASS				
Worst Pair	12-45	36-45	12-45	36-45
NEXT (dB)	9.8	9.4	9.8	9.4
Freq. (MHz)	240.0	250.0	240.0	250.0
Limit (dB)	35.6	35.3	35.6	35.3
Worst Pair	45	45	45	45
PSNEXT (dB)	9.9	9.0	9.9	9.0
Freq. (MHz)	239.0	238.0	239.0	238.0
Limit (dB)	33.0	33.1	33.0	33.1

	Worst Case Margin		Worst Case Value	
	MAIN	SR	MAIN	SR
PASS				
Worst Pair	36-78	78-36	36-78	78-36
ELFEXT (dB)	16.2	16.1	19.2	19.0
Freq. (MHz)	1.0	1.0	248.5	249.5
Limit (dB)	64.2	64.2	16.3	16.2
Worst Pair	78	36	36	78
PSELFEXT (dB)	17.8	17.8	19.9	20.4
Freq. (MHz)	1.0	1.0	249.5	250.0
Limit (dB)	61.2	61.2	13.2	13.2

	Worst Case Margin		Worst Case Value	
	MAIN	SR	MAIN	SR
N/A				
Worst Pair	12-45	12-45	12-45	36-45
ACR (dB)	20.8	21.8	37.5	37.7
Freq. (MHz)	3.4	14.4	240.0	250.0
Limit (dB)	61.8	48.7	5.3	4.2
Worst Pair	45	12	45	45
PSACR (dB)	21.1	22.5	37.6	37.8
Freq. (MHz)	3.9	4.0	239.0	250.0
Limit (dB)	58.5	58.3	2.7	1.6

	Worst Case Margin		Worst Case Value	
	MAIN	SR	MAIN	SR
N/A				
Worst Pair	36	36	45	36
RL (dB)	1.5	1.7	3.8	4.9
Freq. (MHz)	3.1	23.4	250.0	250.0
Limit (dB)	21.0	19.2	10.0	10.0

Compliant Network Standards:
 10BASE-T 100BASE-TX 100BASE-T4
 1000BASE-T ATM-25 ATM-S1
 ATM-155 100VG-AnyLan TR-4
 TR-16 Active TR-16 Passive



Project: NOVA BILA
 Site: PRO CREDIT

UNTITLED.flw

